

SURVIVAL RATE CALCULATION BY KAPLAN-MEIER METHOD

Population for this study: MEDULLOBLASTOMA

INT MTH	ALIVE IN MTH	DEAD IN MTH	LAST SEEN IN MTH	PROP. DYING	PROP. SURV	SURVIVAL RATE
1	30	1	1	0.034483	0.965517	0.965517241
13	26	1	0	0.038462	0.961538	0.928381963
19	25	1	0	0.04	0.96	0.891246684
28	21	1	0	0.047619	0.952381	0.848806366

Number of cases excluded: 0

Observed survival rate for 60 months: 84.88%

Median months of survival: 37.50

Standard deviation: 22.25

Average age at diagnosis: 6.97

Median age at diagnosis: 7.50

NOTE:

Selected interval is from: Dx Date to Date of Last Contact

SURVIVAL RATE CALCULATION BY KAPLAN-MEIER METHOD

Population for this study: MEDULLOBLASTOMA-DISTANT

INT	ALIVE IN	DEAD IN	LAST SEEN	PROP.	PROP.	SURVIVAL
MTH	MTH	MTH	IN MTH	DYING	SURV	RATE
13	4	1	0	0.25	0.75	0.75

Number of cases excluded: 0

Observed survival rate for 60 months: 75.00%

Median months of survival: 65.50

Standard deviation: 67.71

Average age at diagnosis: 3.00

Median age at diagnosis: 2.00

NOTE:

Selected interval is from: Dx Date to Date of Last Contact

SURVIVAL RATE CALCULATION BY KAPLAN-MEIER METHOD

Population for this study: MEDULLOBLASTOMA-LOCAL

INT MTH	ALIVE IN MTH	DEAD IN MTH	LAST SEEN IN MTH	PROP. DYING	PROP. SURV	SURVIVAL RATE
1	26	1	1	0.04	0.96	0.96
19	22	1	0	0.045455	0.954545	0.916363636
28	18	1	0	0.055556	0.944444	0.865454545

Number of cases excluded: 0

Observed survival rate for 60 months: 86.55%

Median months of survival: 34.50

Standard deviation: 27.49

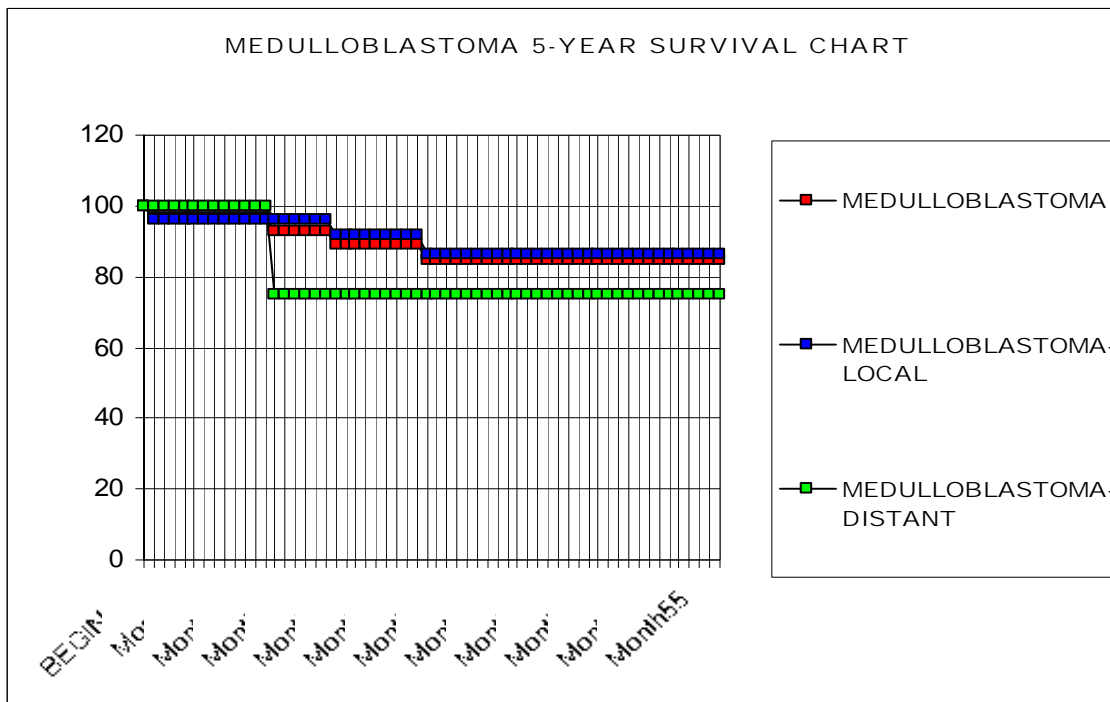
Average age at diagnosis: 7.58

Median age at diagnosis: 8.50

NOTE:

Selected interval is from: Dx Date to Date of Last Contact

	MEDULLOBLASTOMA	LOCAL	DISTANT
BEGIN %	100	100	100
Month1	96.5	96	100
Month2	96.5	96	100
Month3	96.5	96	100
Month4	96.5	96	100
Month5	96.5	96	100
Month6	96.5	96	100
Month7	96.5	96	100
Month8	96.5	96	100
Month9	96.5	96	100
Month10	96.5	96	100
Month11	96.5	96	100
Month12	96.5	96	100
Month13	92.8	96	75
Month14	92.8	96	75
Month15	92.8	96	75
Month16	92.8	96	75
Month17	92.8	96	75
Month18	92.8	96	75
Month19	89.1	91.6	75
Month20	89.1	91.6	75
Month21	89.1	91.6	75
Month22	89.1	91.6	75
Month23	89.1	91.6	75
Month24	89.1	91.6	75
Month25	89.1	91.6	75
Month26	89.1	91.6	75
Month27	89.1	91.6	75
Month28	84.8	86.5	75
Month29	84.8	86.5	75
Month30	84.8	86.5	75
Month31	84.8	86.5	75
Month32	84.8	86.5	75
Month33	84.8	86.5	75
Month34	84.8	86.5	75
Month35	84.8	86.5	75
Month36	84.8	86.5	75
Month37	84.8	86.5	75
Month38	84.8	86.5	75
Month39	84.8	86.5	75
Month40	84.8	86.5	75
Month41	84.8	86.5	75
Month42	84.8	86.5	75
Month43	84.8	86.5	75
Month44	84.8	86.5	75
Month45	84.8	86.5	75
Month46	84.8	86.5	75
Month47	84.8	86.5	75
Month48	84.8	86.5	75
Month49	84.8	86.5	75
Month50	84.8	86.5	75
Month51	84.8	86.5	75
Month52	84.8	86.5	75
Month53	84.8	86.5	75
Month54	84.8	86.5	75
Month55	84.8	86.5	75
Month56	84.8	86.5	75
Month57	84.8	86.5	75
Month58	84.8	86.5	75
Month59	84.8	86.5	75
Month60	84.8	86.5	75



Note: The population selected for this 5 year Kaplan Meier survival study are cases that were diagnosed at MCH between 2003 and 2006 and are considered analytic cases, meaning these cases were diagnosed at the facility and/or administered any of the first course of treatment after the registry reference date and are cases (class 0,1,2). There were a total of 30 Medulloblastomas, 26 were Local and 4 were Distant.

Report prepared by Alicia Abraham, Cancer Registrar
 Dec. 9, 2011
 produced for Study of Quality & Outcomes (Std. 8.1)